

PR-LN1 SETUP GUIDE

8th Edition Published in October 2015 by Fujitsu Isotec Limited

C147-E049-08EN

FUJITSU

PR-LN1 SETUP GUIDE

1

Getting started

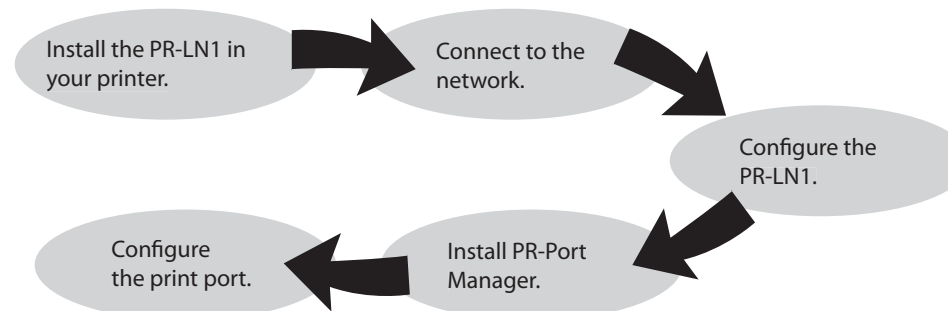
- Thank you for purchasing Fujitsu's printer LAN card PR-LN1. Installing this LAN card in your printer allows you to print in a network environment.
- This setup guide explains the steps for configuring the PR-LN1 in a Windows environment. For further information about the configuration method, refer to the online manual included in the CD-ROM supplied with this product.

- Please note:
When you install the LAN card, you will need to remove screws and the option interface cover. Keep these items on hand.
- This setup guide applies only to computers running Windows.

Caution Injury: Before starting installation, be sure to turn off the power switch and disconnect the power plug from the outlet. Otherwise, you may receive an electric shock.

2

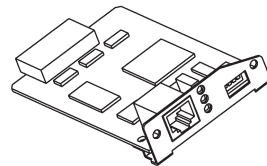
Procedure for configuring the LAN card



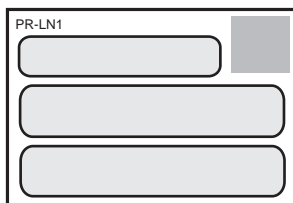
3

Checking the package contents and the items that you will need to prepare

- Before installing the LAN card, verify that the package contains the items below. If some item is faulty or missing, contact the store or dealer where you purchased this product.



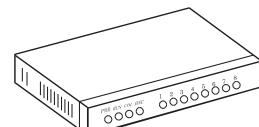
PR-LN1



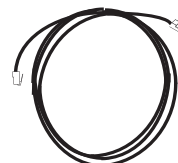
User Software CD-ROM (containing the configuration tools and manual)

Setup Guide (this document)

- Obtain the following.



Ethernet hub

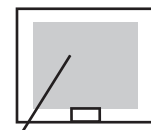


Network cable

- * Use a Category 5 or higher network cable if you are using the PR-LN1 in a 100BASE-TX environment.

4

Components on the panel



1. Network port (10BASE-T/100BASE-TX)

- (1) Network port
Connect the network cable to this
- (2) LINK LED 10BASE (green)
Goes on when network connection is established in 10BASE-TX mode.
- (3) LINK LED 100BASE (green)
Goes on when network connection is established in 100BASE-TX mode.
- (4) STATUS LED (orange)
Blinks when the LAN card is in process of communication.

2. LINK LED (10BASE)
3. LINK LED (100BASE)
4. STATUS LED

5

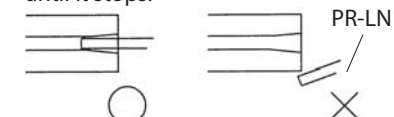
Installing the PR-LN1

For DL3750+/DL3850+

1. Turn off the power to the printer, disconnect the power cord, and remove the option interface cover from the printer.

- * Installing the LAN card in a printer that is turned on may cause a printer failure.

2. Verify that the LAN card can be inserted into the guides. Then install the LAN card by inserting it into the guides and sliding it in until it stops.



3. Confirm that the power to the printer is off, and then insert the power cord.

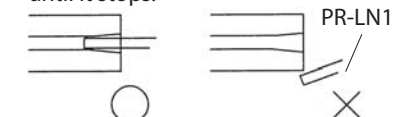
- Caution** 1. If this product is to be connected to another printer, be sure to reset AdminManager to the factory default settings before starting the connection work.

For DL7400/DL7600

1. Turn off the power to the printer, disconnect the power cord, and remove the option interface cover from the printer.

- * Installing the LAN card in a printer that is turned on may cause a printer failure.

2. Verify that the LAN card can be inserted into the guides. Then install the LAN card by inserting it into the guides and sliding it in until it stops.



3. Confirm that the power to the printer is off, and then insert the power cord.

- 2. Burn: Be sure not to touch the printer board during operation or after turning it off because a part of the printer board may be very hot. Touching the board under such circumstances may lead to injury or may even damage the board itself.

6

Connecting to the network

1. Verify that the power to the printer is off.
2. Connect the network cable to the network port (10BASE-T or 100BASE-TX) on the PR-LN1.
3. Connect the other end of the network cable to the Ethernet hub.
4. Turn on the power to the printer and verify that the LINK LED on the LAN card goes on.



7

Starting User Software

- The explanation that follows assumes the following environment:
 - A DHCP server is included.
 - A printer driver is already installed on your PC.
 - In the case of Windows 8/8.1/Server 2012/2012 R2, please start on a desktop screen.
 - * When you are environment without a DHCP server, please refer to 3 and 4 chapter of an online manual.
 - The steps for configuring the PR-LN1 with Quick Setup are explained here.
 - If you need to make detailed configuration settings or to change the existing configuration, refer to Chapter 5, Configuration-Related Functions, in the PR-LN1 Online Manual.
 - * The displayed screens may vary with the environment in which you configure the PR-LN1
1. Insert the attached CD-ROM (User Software) into the CD drive of your computer running Windows.

2. The main menu starts automatically. Click ReadMe, read the contents, and click Setup.



<Main menu>

* Reference) *1

3. Click Quick Setup.



* If the main menu does not start automatically, directly run Autorun.exe on the CD-ROM drive (the D drive if the CD-ROM drive letter is D).

* Reference) *2,*3 and *4

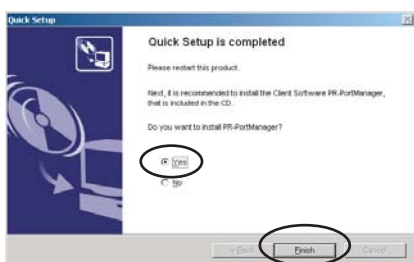
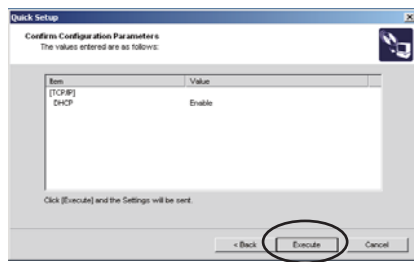
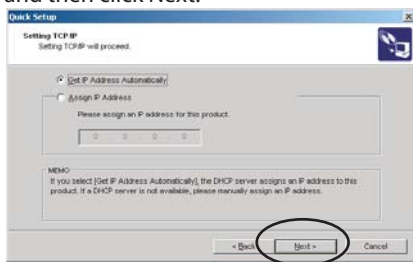
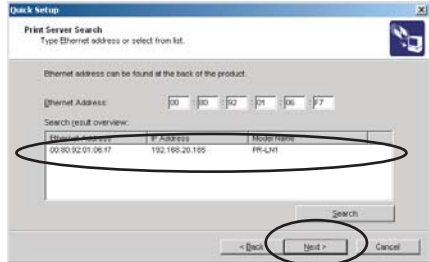
- *1 The "AutoPlay" screen is displayed for Windows Vista/7/Server 2008/2008 R2 and select "Run AUTORUN.EXE". The toast screen is displayed for Windows 8/8.1/10/Server 2012/2012 R2, select a screen, and select "Run AUTORUN.EXE".
- *2 The screen of "User Account Control" is displayed and select "Allow", when you use Windows Vista/Server 2008.
- *3 The following message is displayed in the environment of Windows XP (since SP2)/7/8/8.1/10/Server 2003/2008 R2 /2012/2012 R2 and click "Yes". "When using this application, if needs to be added to the exceptions list of the Windows firewall. Do you want to add this application to the exceptions list?"
- *4 If the operating system is Windows 7 /8/8.1/10 or Windows Server 2008 R2/2012/2012 R2, and the User Account Control window appears, click Yes.

Continued on the back

8

Quick Setup

1. Quick Setup starts. Click Next.
2. The software license agreement is displayed. Read the contents and click Yes to indicate your acceptance of the terms of this agreement.
3. Select the LAN card you want to configure, and then click Next.
4. Assign the IP address. Check Obtain An IP Address Automatically, and then click Next.
5. Check the settings and click Execute.
6. This completes the Setup procedure. Check Yes, and then click Finish.



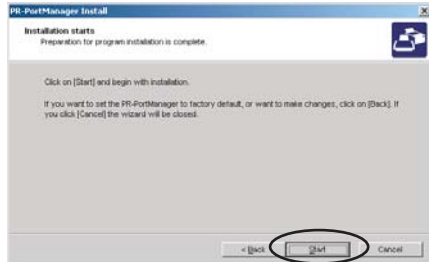
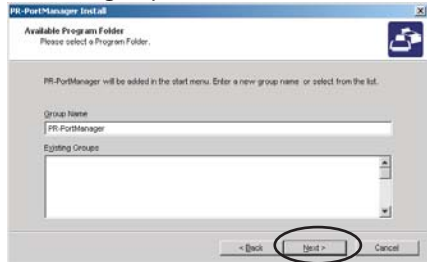
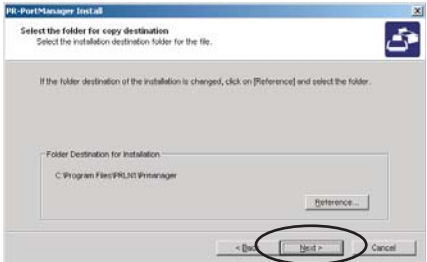
- If the LAN card is not included in the search result list, click Repeat Last Search. You can also select this LAN card by directly entering the Ethernet address.
- Check the Ethernet address written on the label attached to the LAN
- * To assign the IP address manually, select Assign IP Address and enter your desired IP address.

The installation of PR-Port Manager starts.

9

Installing PR-Port Manager

1. The PR-Port Manager installer starts. Click Next.
2. The software license agreement is displayed. Read the contents and click Yes to indicate your acceptance of the terms of this agreement.
3. Select the copy-to folder. Select the installation folder, and then click Next.
4. Select the program folder. Enter the group name, and then click Next.
5. The installation of PR-Port Manager starts. Click Start.
6. This completes the Installation procedure.



- * Click Browse to select the installation folder.
- * When not specifying a name, use the default group name.
- * Reference) *1

*1 The following message is displayed in the environment of Windows XP (since SP2)/Vista/7/8/8.1/10/Server 2003/2008/2008 R2/2012/2012 R2 and click "Yes".
"When using this application, if needs to be added to the exceptions list of the Windows firewall. Do you want to add this application to the exceptions list?"

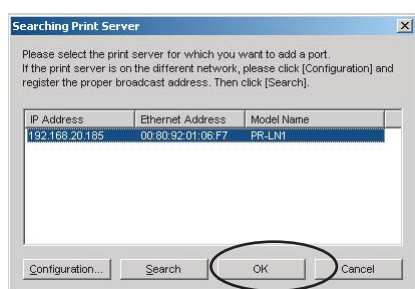
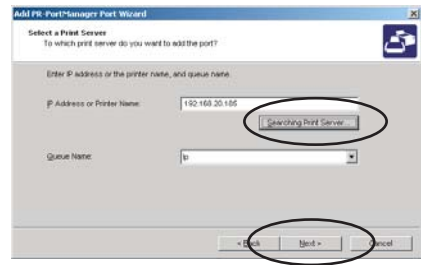
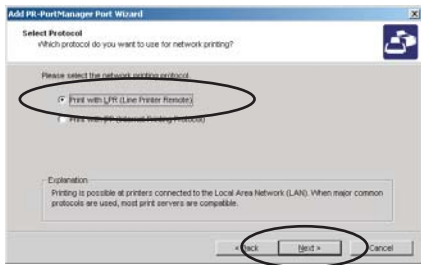
The Add PR-Port Manager Port wizard starts.

10

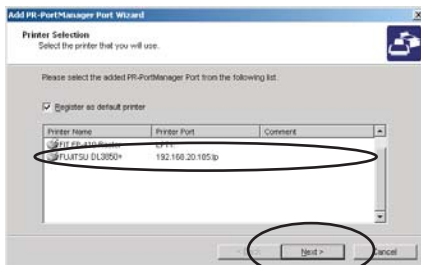
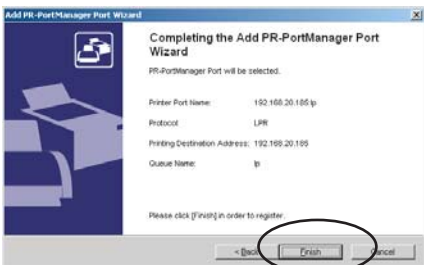
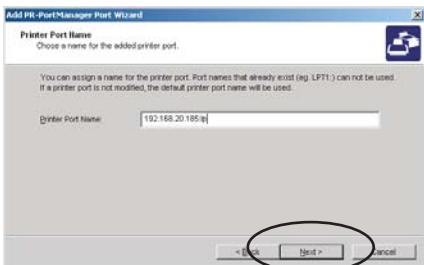
Adding a PR-Port Manager port

The explanation here assumes that Print in LPR mode was selected when PR-Port Manager was installed. If another option is selected, refer to the PR-LN1 online

1. Add a PR-Port Manager port. Click Next.
2. Check Print in LPR mode, and then click Next.
3. Specify the print server. Click the Find Print Server button to display a list of print servers, select this LAN card, and click Next.
4. Select the LAN card to which the port is to be added, and then click OK.



5. Assign the printer port name. Enter the printer port name, and then click Next.
6. The settings are displayed. Check them, and click Finish. This completes the Port addition procedure.
7. Select the printer that will use the added port, and then click Next.
8. This completes the Port configuration procedure.



- * When not specifying a name, use the default printer port
- 9. When setting the printer driver, set the bidirectional communication to disable.

ONLINE MANUAL

The ONLINE MANUAL is provided as an Adobe® PDF file on the CD shipped with your LAN card. It requires Adobe Reader for viewing. To view the ONLINE MANUAL, double-click MANUAL in the main menu. If you do not have Adobe Reader installed on your PC, it is available for downloading for free from the Adobe web site (www.adobe.com).